

## PRESS INFORMATION

014 – 5. September 2018

InnoTrans 2018: unveil of VARYO II with media channel

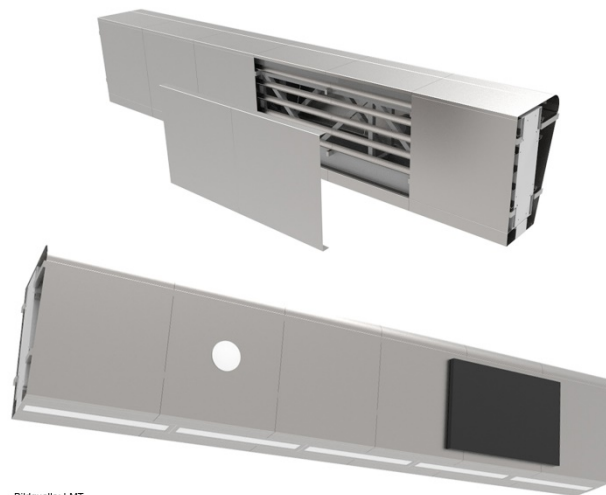
Page 1 of 2

### Light and media solution for stations near the sea

***At the InnoTrans in Berlin LMT Leuchten + Metall Technik GmbH presents its advanced LED platform luminaire VARYO II in combination with a special media channel. This particularly developed solution for stations at the seaside is also designed to withstand earthquakes.***

**Hilpoltstein, 5. September 2018** – With the advanced LED platform luminaire VARYO II in

combination with project-specific media channels, LMT Leuchten + Metall Technik GmbH offers a comprehensive package for all kinds of stations.



Bildquelle: LMT

For a large-scale station project close to the coastline, VARYO II was equipped with a stainless steel housing and installed in a custom-designed and earthquake-proof stainless steel media channel. Its generous dimensions of 700 mm x 850 mm offer

enough space for up to twelve cable trays, as well as for ceiling floodlights, monitors, loudspeakers, destination displays, flashing lights, antennas and cameras. Also support structure, housing and fastenings were made of stainless steel.

VARYO II is characterized by a high luminous efficacy and an excellent glare restriction, due to the combination of louvre and internal diffuser. With its either symmetrical or asymmetrical light emission and two different lengths (1220 mm and 615 mm), VARYO II is able to cope with various platform geometries. The standard version is equipped with an aluminium housing. VARYO II is available in different variants which comply with DIN/EN, VDE or UL regulations.

At the InnoTrans in Berlin, the LED platform luminaire VARYO II together with the stainless steel media channel will be presented at the booth of LMT Leuchten + Metall Technik GmbH in Hall 7.1a, Stand 306.

## PRESS INFORMATION

014 – 5. September 2018

InnoTrans 2018: unveil of VARYO II with media channel

Page 2 of 2



### **About LMT Leuchten + Metall Technik GmbH**

*LMT Leuchten + Metall Technik GmbH specializes in the development and manufacturing of tailor-made solutions for lighting and metal projects. The portfolio comprises lighting tubes and luminaires for train stations, products for industrial lighting, various lighting solutions for architecture as well as housing and metal parts for medical technology, machine construction, interior works and art objects. Since 2016 LMT offers with its LED luminaire families YECTO, LYCA, LYSO, AGIO and SCOPE ideally suited products for energy efficient illumination of offices, schools, retail shops and residential buildings.*

*Since its foundation in the year 1984, the company worked together with many renowned clients, architects and lighting planners and implemented more than 2,000 national and international projects, including numerous train stations in Europe and America, as well as lighting projects such as the Museum Island in Berlin, the main church St. Katharinen in Hamburg, the Airport in Frankfurt as well as the Kulturpalast in Dresden.*

*Further Information on [www.lmtgmbh.de](http://www.lmtgmbh.de).*

#### Press contact:

##### **TWO POINT SEVEN**

Agentur für Kommunikation & Marketing

Barbara Czech-Ettinger

Zum Feldkreuz 31

91161 Hilpoltstein

Tel.: +49 (0)9174/999 64 30

E-Mail: [Barbara.Czech-Ettinger@2point7.de](mailto:Barbara.Czech-Ettinger@2point7.de)

#### Company contact:

##### **LMT Leuchten + Metall Technik GmbH**

Marketing

Elke Otterpohl

Dieselstraße 5

91161 Hilpoltstein

Tel.: +49 (0)9174/47 97 27

E-Mail: [Elke.Otterpohl@lmtgmbh.de](mailto:Elke.Otterpohl@lmtgmbh.de)

*All designations, brand names and trademarks used in the text are the property of the corresponding manufacturer. Subject to error and modifications.*